



Welcome to



Advanced CCA

Visit Our Website
www.advancedcca.co.uk





Table of Contents

- About Us: Pages 3–6
- Benefits & Service Delivery: Pages 7–9
- Our ISWs, Operations & Assessments: Pages 10–16
- Who We Work With: Pages 17–18
- Advanced Plus: Page 19–21
- Our Group: Pages 22–24



Our Company

ACCA has a reputation you can trust. For over 30 years, we've dedicated ourselves to providing exceptional services to local authorities and legal firms. Join our nationwide partners and benefit from our unwavering commitment to excellence and top-tier evidence-based assessments.

You'll have easy access to a nationwide panel of seasoned independent social workers from diverse professional backgrounds with us. We'll assign experts with the right skill sets, experiences, and language proficiencies to provide you with comprehensive assessments. This is how we help you ensure the best outcome for children and families.

The handl Group

Advanced ACA is backed by the handl Group, expert investors in health and social care, specialising in spotting and supporting companies with promise. With the backing and guidance of the handl Group, we can continually improve, offering you even better standards of quality and service. At the same time, we maintain our independence as providers of assessments.



Our Team



Amanda Walsh – Quality Panel Manager

Amanda has twenty-one years of post-qualifying experience. For most of her practice, she has worked within child protection, initially as a social worker and for eight years as a Children's Guardian.



Sandra Van Empel – Service Panel Manager

Sandra has extensive experience in child welfare and child protection, spanning the last 12 years. Her roles have involved working with statutory child care within local authorities, young offender institutes, prisons, specialist parent and child units, foster placements, and family homes.



Sarah Roddy – General Manager

Sarah has over 20 years of experience working within the medical and legal sectors, gaining experience in civil and family law.

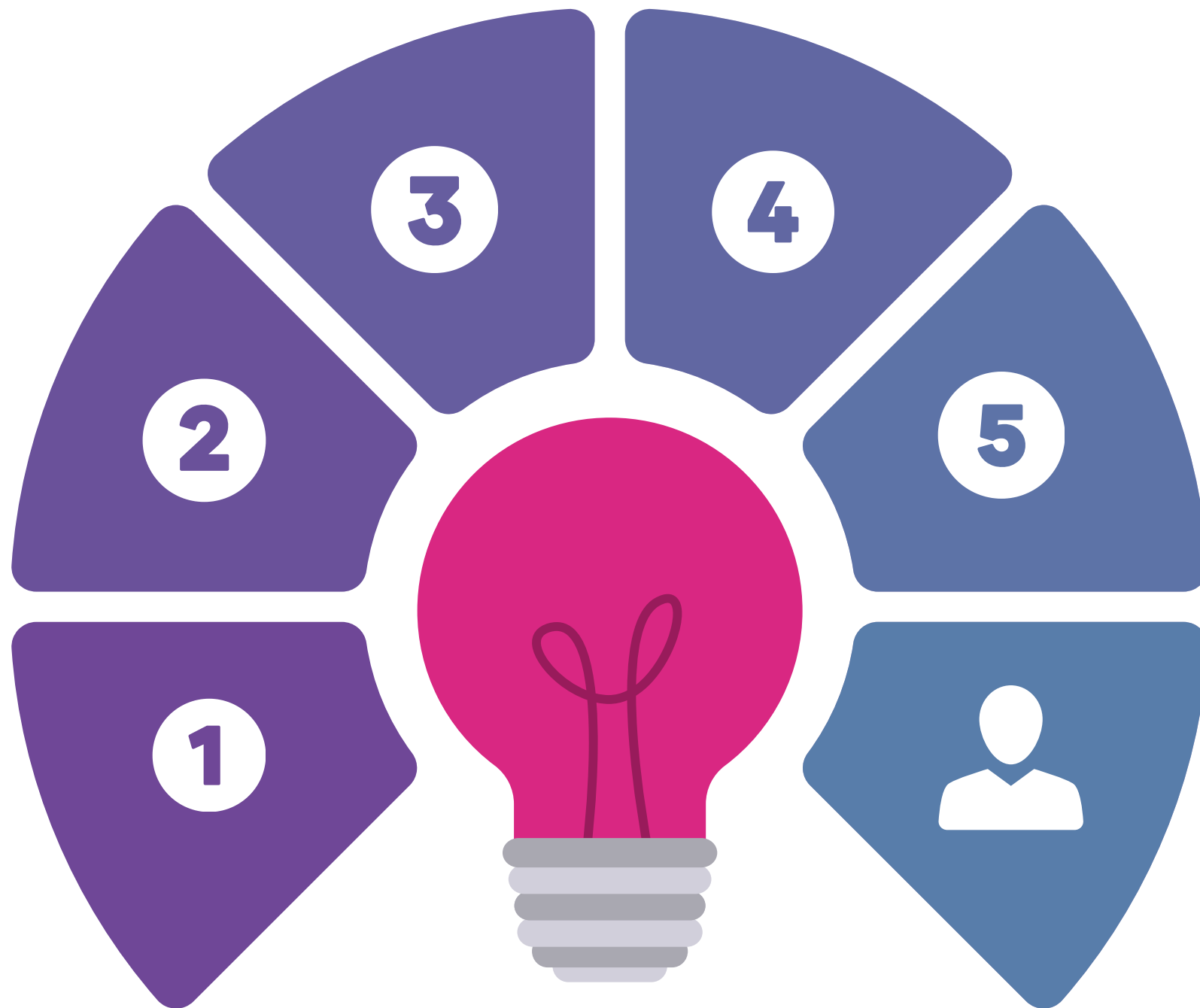
Your Partner

At AACCA, we provide trusted, top-tier assessments for local authorities and legal firms. Our nationwide panel of experienced independent social workers offers comprehensive, evidence-based assessments tailored to your needs.

We assign experts with the right skills, experience, and language proficiency to ensure the best outcomes. Collaborate with a diverse team and receive nuanced insights and tailored reports. With AACCA, you can always rely on professionalism, sensitivity, and dedication in every assessment.



What Makes ACCA Unique?



1

Managerial Capacity

Our strong managerial oversight simplifies workforce implementation and logistics. This approach not only lightens the load on busy managers but also enhances overall productivity and effectiveness within your team.

2

The handl Group

We're a proud member of The handl Group alongside prestigious businesses such as Speed Medical and Foresight.

3

Consultancy

Our team is on hand if you need assistance managing both small and large-volume cases.

4

Experience

All of our ISWs have a minimum of 8 years post-qualifying experience.

5

Our Team

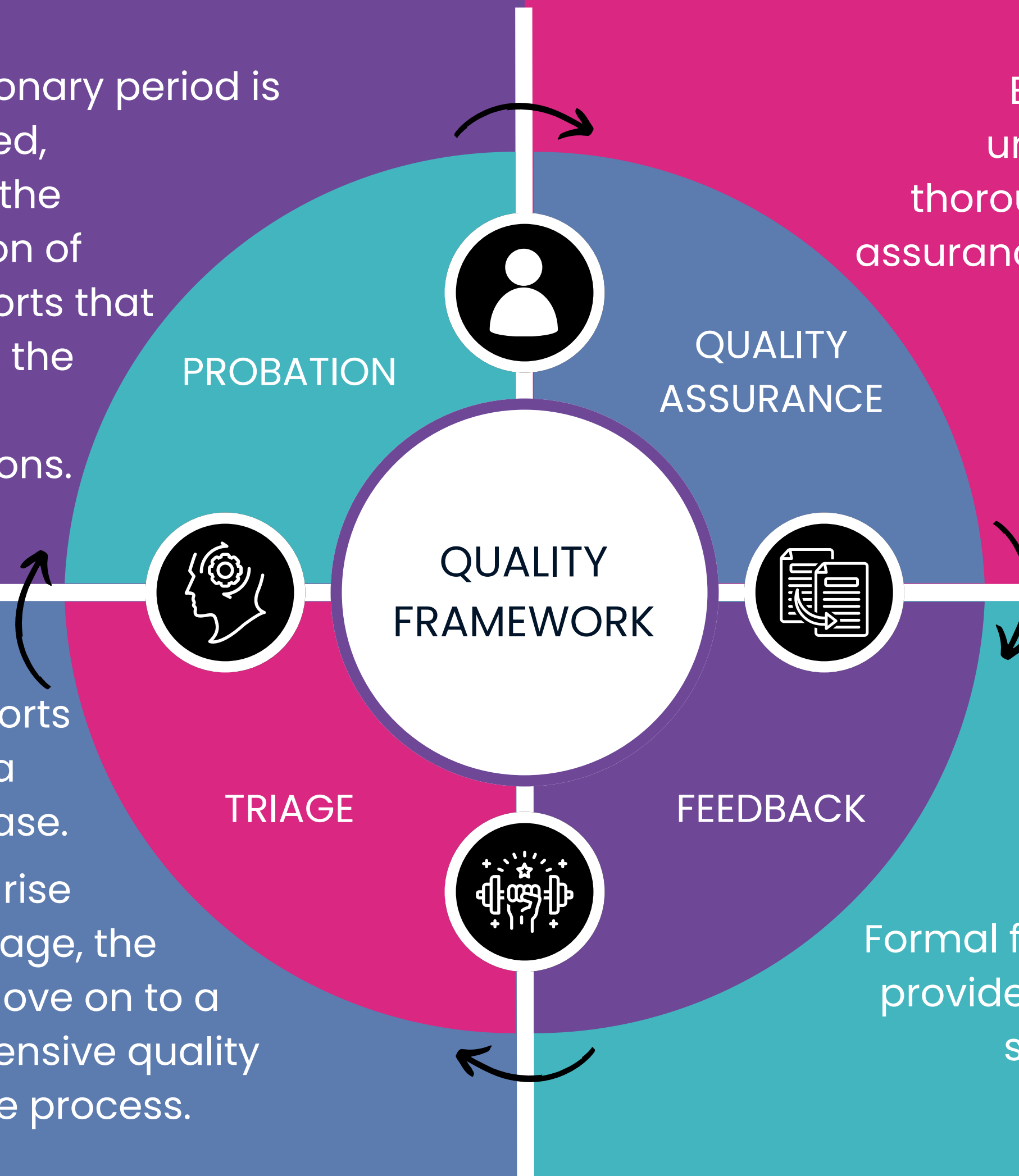
The team at ACCA has a range of experiences in the field of social work, not just in the office!

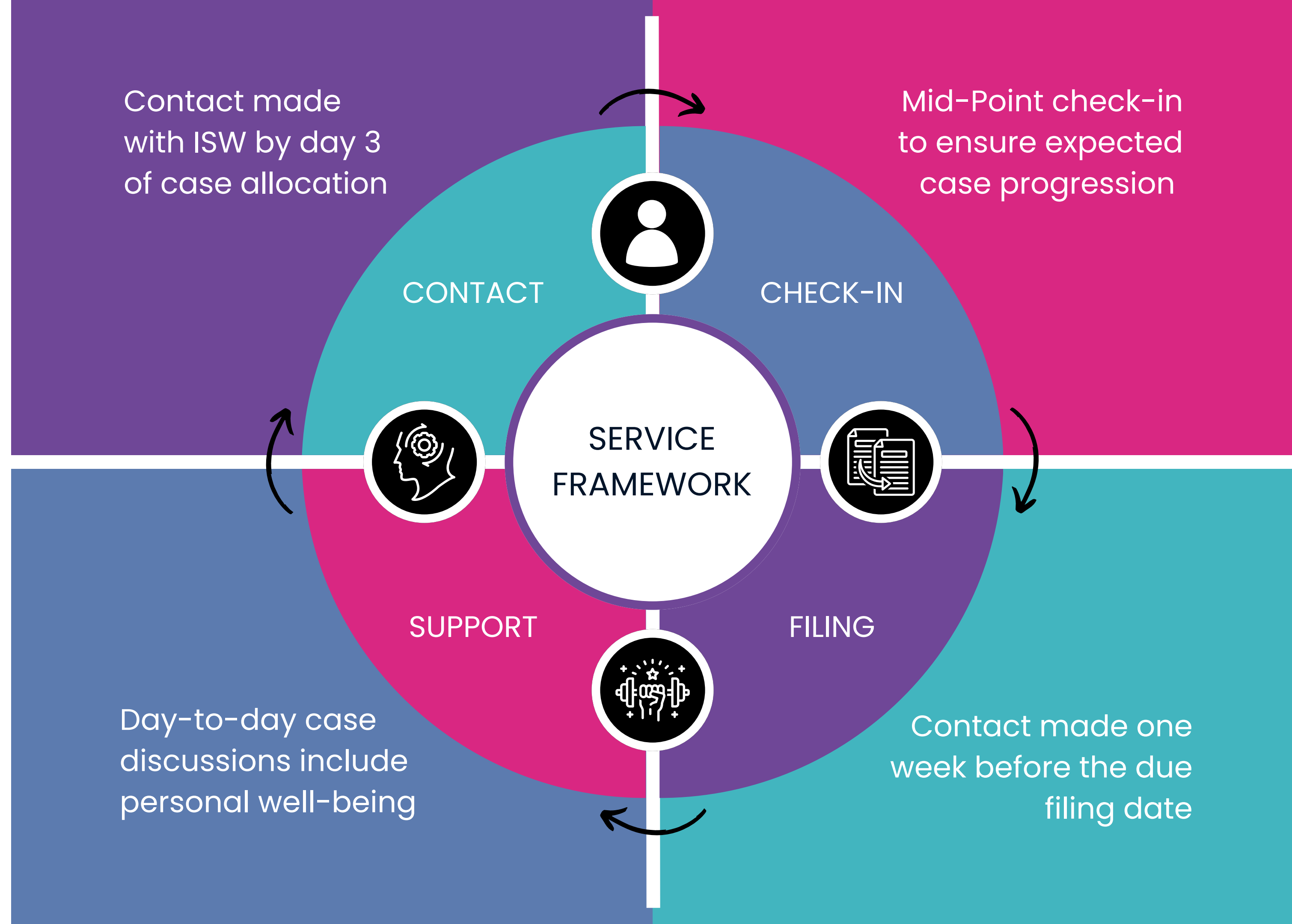
A probationary period is established, requiring the submission of three reports that align with the panel's expectations.

Each report undergoes a thorough quality assurance process.

Three reports undergo a triage phase. If points arise during triage, the reports move on to a comprehensive quality assurance process.

Formal feedback is provided for every submission.





120+ ISWs



Nationwide Network

Access our nationwide network of over 120 experienced Independent Social Workers to request nationally recognised and tailored assessments unique to ACCA. Every assessment puts families' needs and requirements first to build a fairer, more accurate picture.



Our Promise

Every Independent Social Worker you'll work with has the following:

- A minimum of 8 years post-qualifying experience
- Social Work England registration
- An enhanced DBS check
- Court experience
- ICO registration
- Professional & public insurance



“

The ISW was truly dedicated throughout this process. She had frequent communication with several professionals and family members, wrote a fair and balanced parenting assessment (and sibling assessment), and gave evidence in court clearly and confidently.

Having worked with a multitude of Independent Social Workers, it's a pleasure to work alongside someone who strives to ensure professionalism, accuracy, and emotional intelligence are utilised simultaneously in their approach.

– Local Authority

”

Parenting Practitioners



Expert Support

Parents often need support. That's why we give our clients access to expert support in the form of Parenting Practitioners. With their expertise, they engage with parents using pictorial aids, videos, role modeling, and written materials. Even if you work with parents with learning needs, our Parenting Practitioners will create interactive, accessible sessions that pass on key skills.



Our Promise

Parenting doesn't come with a manual. The parenting behaviours we see often reflect negative early life experiences. By working closely with parents and families, our Parenting Practitioners break the cycle of generational interventions, nurturing a supporting environment and transforming the fortunes of the families in your care.

Thanks to our rigorous due diligence and training, you can trust our parenting practitioners to deliver excellence. All practitioners are subject to our safer recruitment practices and must undergo our in-house training.

A photograph of a man and a woman holding a baby, with a purple overlay. The man is on the left, looking at the baby, and the woman is on the right, also looking at the baby. The baby is in the center, being held by both parents. The text is overlaid on the image.

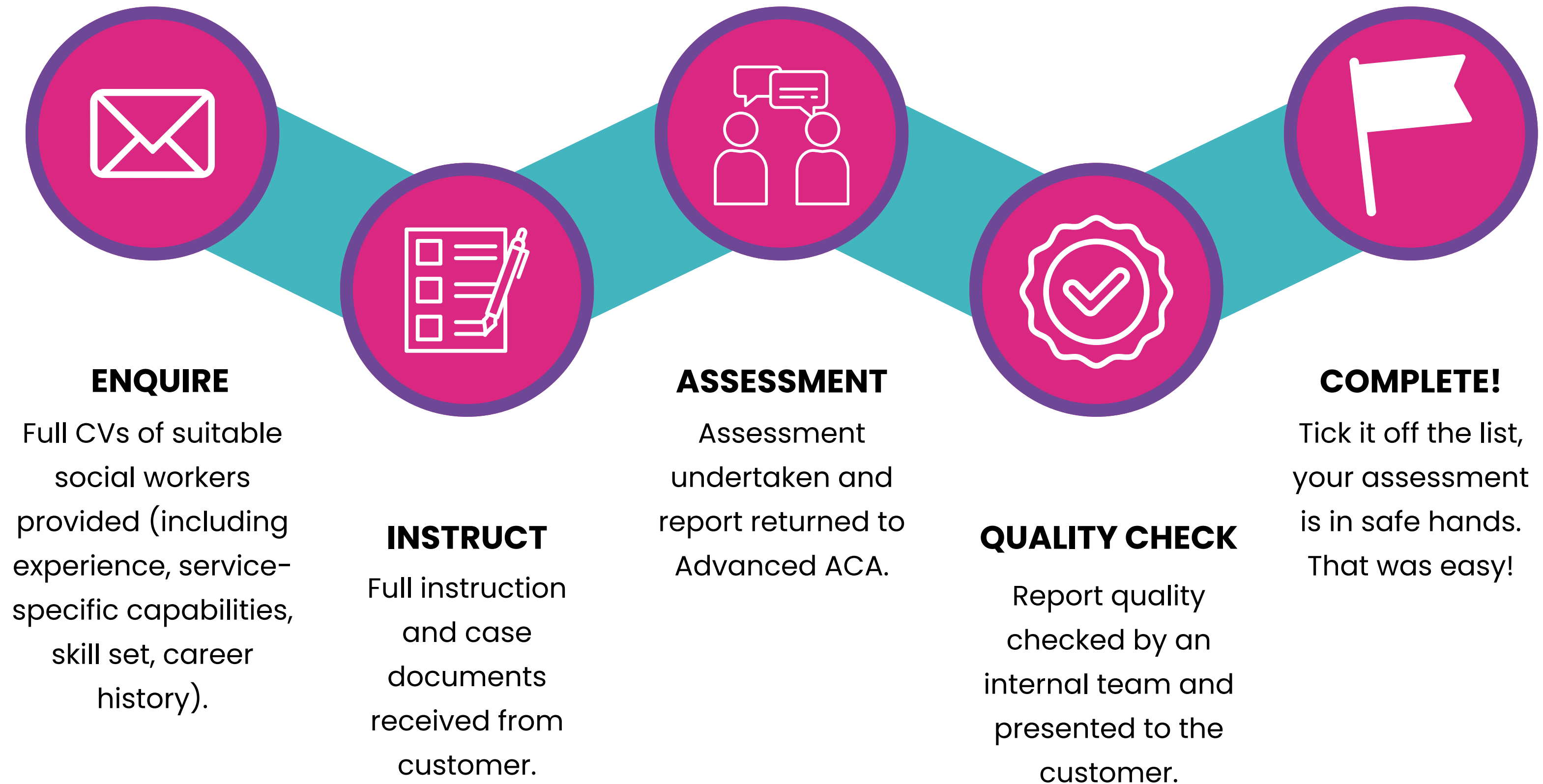
“

I am extremely pleased with the outcome of this report/assessment, with no corrections to add. This report is written word for word regarding things that were discussed. The ISW has been a great help and guidance throughout the whole time the assessment started up until the very end, I couldn't thank her enough.

– Parent

”

Operations Process



Our Assessments



Standard Assessments

- Additional Needs Assessments
- Viability Assessments
- Standard Parenting Assessments
- High Risk Assessments
- Sibling Assessments
- Age Assessments
- Connected Persons Assessments
- Disability, EHCP and Needs
- Special Guardianship Order Assessments
- Fostering and Adoption Assessments
- Child Permanence Reports
- Section 7s Reports
- Section 37 Reports
- Psyche Assessments
- Tailored Multi-Disciplinary Packages

Specialist Assessments

Choose the support you need from a range of specialist assessments, including:

- Re W assessments
- AAA resolution model assessments
- Age assessments
- Aim assessments
- Child sexual/criminal exploitation assessments



AAA Assessment



When a child suffers a severe non-accidental injury, you need to ensure the correct assessments take place. Based on the Resolutions Model of Assessment pioneered by John Gumbleton and the late Colin Luger, our AAA Assessment is carried out when a family court finds that a child has been harmed.

Designed for use in challenging circumstances, this kind of assessment considers, even when the parents do not accept the court's findings, whether the subject child could remain or be rehabilitated by their parents – or whether a subsequent child could be cared for by the parents who were found culpable for the injury.

This resolution approach assesses the family and the more comprehensive support network available and helps you discover whether a safety plan could be implemented appropriately for the child and family.

Referrals for this assessment will only be considered when a Judge finds a parent guilty of harming or failing to protect their child and where parents have a reliable, dependable support network open to engaging with our assessors.

Solicitors



Unique

- Experienced supply chain provider dedicated to meeting customer needs.
- Nationwide capacity to supply MCA, CoP3, Best Interests Reports, or support with Second-Opinion cases such as Care Act Assessments.
- Dedicated resources in deployment, administration, quality assurance, and financial management to ensure the highest support quality within the strictest timescales.



Experienced

- Extensive knowledge and implementation of Legal Frameworks such as the Care Act 2014, Human Rights Act 1998, Mental Capacity Act 2005, and amended Mental Capacity Act 2007, including Deprivation of Liberty Safeguards



Dedicated

- AACA acts as a dedicated partner, transcending traditional service provision. Managerial oversight streamlines workforce implementation and mitigates logistical challenges. Improve your supply chain delivery with an experienced Social Care Provider.
- Tailored services meet specific needs each time, ensuring personalised support and consultation.

Local Authorities



Holistic

- We prioritise a holistic understanding of individuals, recognising the unique complexities of each person's journey. Collaboration and fostering partnerships with individuals, their families, and the broader community are fundamental to ensure a comprehensive care network.



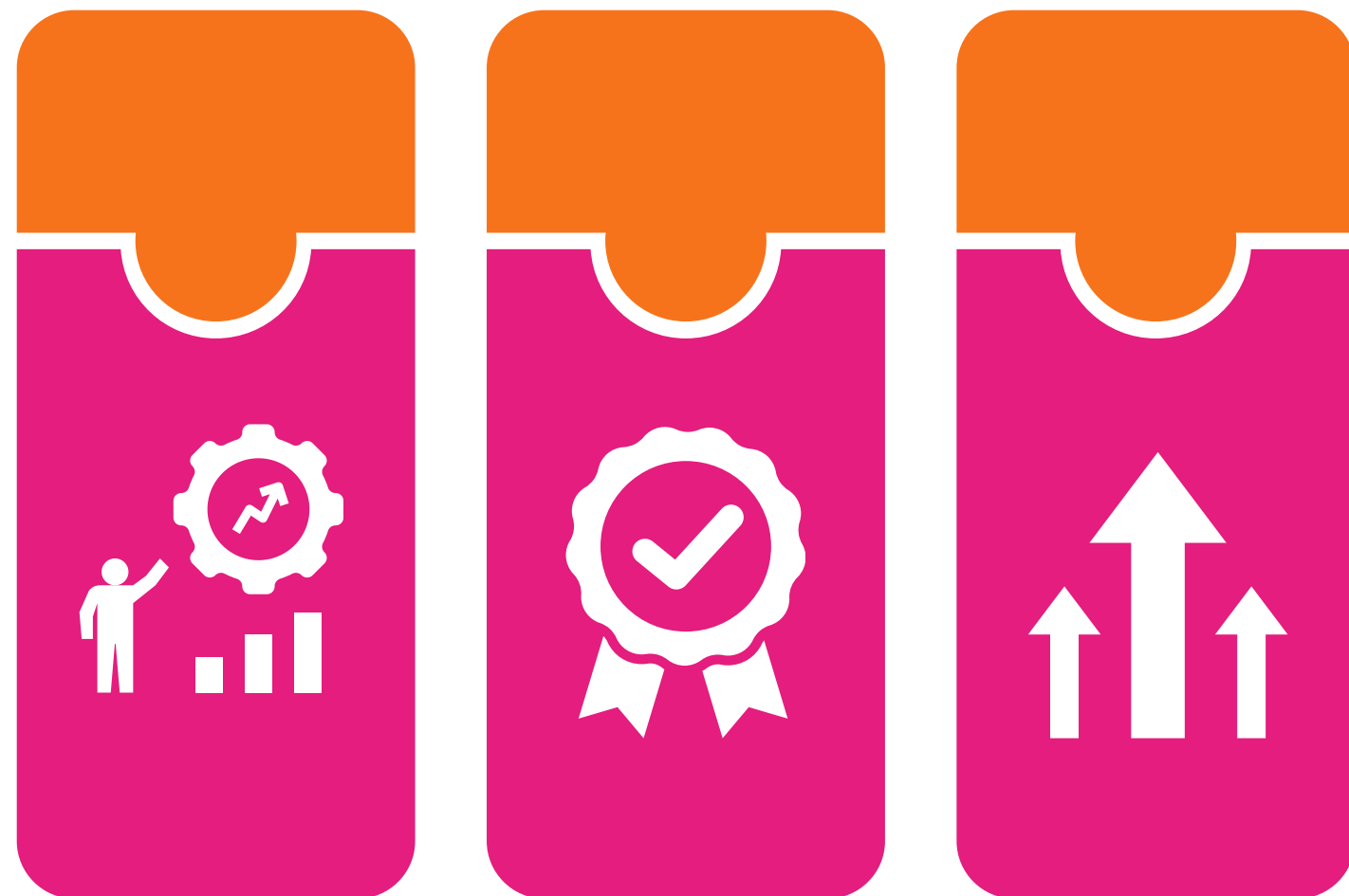
Innovation

- Our ISWs value innovation as a driving force, constantly seeking new and practical solutions to enhance the quality of life for those under our care. Our dedication to transparency, empathy, and respect shapes every interaction, creating an environment where individuals feel heard, understood, and empowered.



Efficiency

- Financial Efficiencies: We streamline workforce implementation and address logistical challenges to optimize costs and resources.
- Efficient Service Delivery: Our social workers conduct holistic assessments, adhering to AACA's Core Standards and safeguarding policies, while identifying potential efficiencies.



Services

24/7 in the Home Programme

Undertaken by an Independent Social Worker and a team of experienced Parenting Practitioners, our 24/7 in the Home Programme and Community-Based Supervision are delivered within the family home and in the local community over a level and period of time that is determined by the instructing Local Authority.

Contact Supervision

The Children Act 1989 imposed a duty upon Local Authorities to promote 'reasonable contact' between a looked-after child and his/her parents and specified others, providing this is consistent with the child's welfare, and it is reasonably practical to do so.

Outreach

Undertaken by our team of experienced Parenting Practitioners, our Outreach Service supports families in various circumstances by providing necessary support and supervision for parents with their children when identified risks necessitate additional safeguards.

Top Programme & Snap Analysis

Both are bespoke packages of teaching and support provided and tailored to the parent's needs. The SNAP Analysis focuses on determining a parent's strengths and weaknesses, whereas the Top Programme supports parents in their homes to develop their capacity to care for their children independently or as a stand-alone service.



Award-Winning



24/7 in the Home Programme

This pioneering assessment methodology takes input from ISWs and Parenting Practitioners to prioritise safety, parental involvement and community integration. Taking place within a family's home and community, this two-stage assessment begins with a suitability/risk appraisal conducted by an independent social worker. Their evaluation provides recommendations for advancement, unsuitability, or a subsequent review with extended observations. That way, you're always certain the right assessment is carried out.

Case Studies

We facilitated comprehensive support while ensuring the children's safety within their home environment. A dedicated team of parenting practitioners provided guidance and monitoring four days a week, effectively managing and mitigating identified risks. Community-based supervision allowed the mother to develop the necessary parenting skills gradually.

Teaching

Our SNAP Analysis and Top Programme services go hand in hand with the 24/7 in the Home Programme. Here, we use pictorial aids and other accessible tools to help parents grow their parenting skills.

Bespoke

The assessment is available at many different intervention stages and can be fully tailored to your needs in both the duration of the program and the frequency of visits to the family.

Court Proceedings

The thorough observations in the family home allow for detailed and reliable evidence in court. This poses financial advantages and also minimizes the chances of a child's removal from the family.

Outreach



When a family needs additional assistance, we'll help you to help them. Our outreach service, led by our experienced Parenting Practitioners, lets you offer vital support and supervision to families facing various challenges or where identified risks require extra safeguards.

We can provide tailored assistance to new or inexperienced parents, especially after the birth of a baby with potential risks. We can also help you assist parents with learning difficulties from the outset, ensuring a solid foundation for effective parenting.

Our outreach service also aids parents with a history of child removal due to safeguarding concerns, guiding them through a structured plan for a safer environment. Temporary support is also available for parents facing physical difficulties, especially when their usual support network is unavailable.

ACCA offers help even in temporary crises or times of heightened risk, intervening to aid parents struggling to cope alone with the care of their child or children. Post-birth, when known risks exist and long-term care plans are uncertain following hospital discharge, ACCA provides vital support when needed most.



Adult Services



AACA

ACCA doesn't just help children and young families. Our Advanced Adult Care Assessments (AACA) lead the way in social care assessments for adults, helping you benefit from the right assessments no matter how old a person is.



Partnerships

Thanks to close partnerships with Local Authorities and Solicitors, you'll receive comprehensive adult social care assessments for your private and legal aid-funded cases. From single assessments to large case volumes, our bespoke solutions minimise backlogs and efficiently prioritise workloads to help you reduce your administrative burden.



Assessments

- Needs Assessments and Care and Support plans
- Social Care Reviews
- Mental Capacity Assessments
- CoP3 Assessments
- Best Interests Reports
- DoLS Assessments
- Transitions Assessments
- Carers Assessments
- Full Psychological Assessments
- Cognitive Assessments
- Continuing Healthcare Assessments

F O R E S I G H T



If your family, criminal or immigration case needs more than ACCAs range of assessments, our partnership with Foresight will ensure you have access to the expert witness reports you need even within the strictest court deadlines.

Foresight brings 15 years' experience to deliver timely, accurate reports that help you present a convincing picture of evidence with no additional time investment from your team.

Adding Foresight's nationwide panel of expert witnesses to our panel of ISWs, we'll take the time to understand your case's requirements and source both the assessments and expert witness reports your case needs.

All reports are delivered within Legal Aid rates, keeping your costs and administrative burden down.



enquiries@foresight.expert



0330 088 9000



Thank You



Advanced CCA

Visit Our Website
www.advancedcca.co.uk

